

DIGICERT® IOT DEVICE MANAGER

Manage device identity at scale, at every stage of the device lifecycle

Establishing and managing device trust

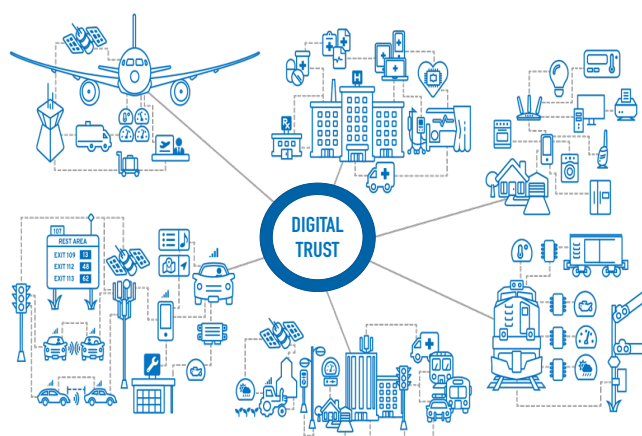
DigiCert® IoT Device Manager is a PKI management solution that embeds and manages device identity at scale through the provisioning and lifecycle management of digital certificates.

IoT Device Manager supports a broad range of certificate types and enrollment methods, meeting the diverse security needs and form factors of the connected device market.

Flexibility in device identity provisioning

DigiCert® IoT Device Manager embeds identity at any point in the device lifecycle, including provisioning to:

- Chipsets and parts prior to manufacturing assembly
- Devices at the point of manufacture (e.g., device birth certificates)
- Devices that are operational in the field



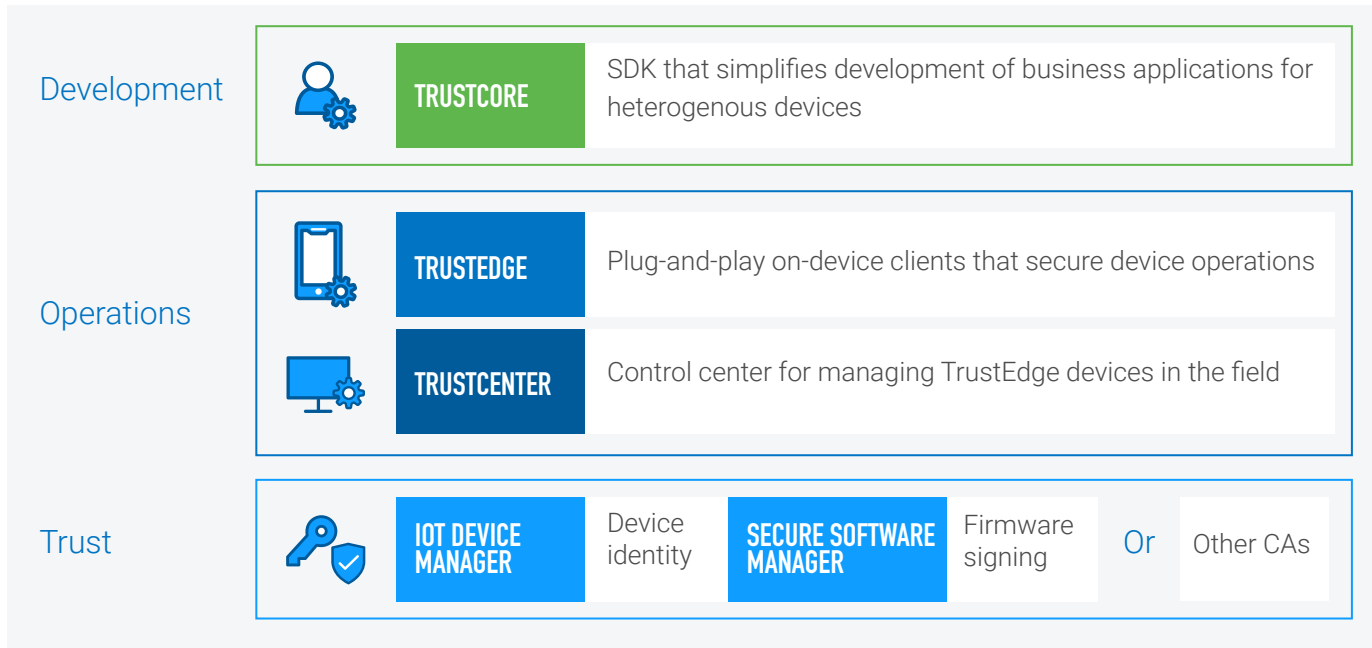
Device Trust is essential to digital transformation and to a connected world

Comprehensive certificate types, enrollment methods, and authentication options

CERTIFICATE & KEY TYPES	ENROLLMENT METHODS	ENROLLMENT AUTHENTICATION
<ul style="list-style-type: none"> • Custom EKUs • Custom Policies • Custom Extensions • Non X.509 (e.g., Global Platform) • SHA2 and SHA3 • Key types: RSA, ECDSA, Edwards 	<ul style="list-style-type: none"> • EST • CMPv2 • SCEP • ACME • REST API • Batch, portal • Support for server-side key pair generation 	<ul style="list-style-type: none"> • Passcodes • Certificates • Enrichment options: 1-time use, restricted enrollment by IP, schedule, date range or usage • Automation of credentials through API

DigiCert for Connected Devices | Device Trust

IoT Device Manager pairs device trust with device operations security in the DigiCert for Connected Devices family of products, addressing the needs of developers, manufacturers, and operators for hardening operational security throughout the device lifecycle, accelerating time to market, and streamlining enrollment to cloud services.



DigiCert ONE: The Platform for Digital Trust

IoT Device Manager is part of the DigiCert ONE platform, which unifies PKI workflows on a modern, containerized architecture delivering:

- **High scalability** with automated orchestration for high volume workloads
- **Deployment flexibility**, supporting on-premises (including air-gapped environments), cloud (public and private), hybrid, and in-country deployment models
- **Fast time to value** with rapid CA and ICA creation
- **Unified PKI management** for PKI workflows governing TLS, enterprise PKI, code signing, document signing, and IoT device trust.

If you would like a demo of DigiCert® IoT Device Manager, please email pki_info@digicert.com.

—————
About DigiCert, Inc.

DigiCert is the world's leading provider of digital trust, enabling individuals and businesses to engage online with the confidence that their footprint in the digital world is secure. DigiCert® ONE, the platform for digital trust, provides organizations with centralized visibility and control over a broad range of public and private trust needs, securing websites, enterprise access and communication, software, identity, content and devices. DigiCert pairs its award-winning software with its industry leadership in standards, support and operations, and is the digital trust provider of choice for leading companies around the world. For more information, visit digicert.com or follow [@digicert](https://twitter.com/digicert).

© 2022 DigiCert, Inc. All rights reserved. DigiCert is a registered trademark of DigiCert, Inc. in the USA and elsewhere. All other trademarks and registered trademarks are the property of their respective owners.